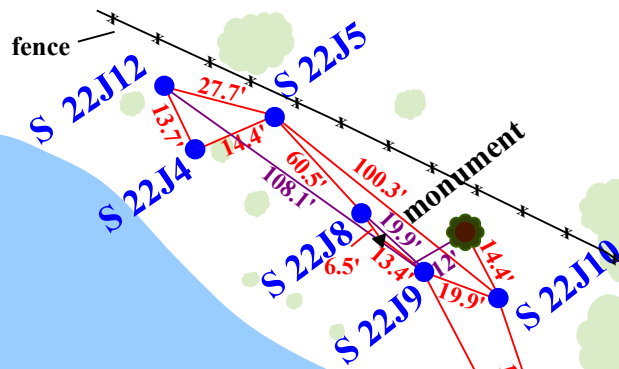


# Clarks Monitoring Station (6 wells)

Latitude: 35.137475  
Longitude: -77.171389

**R10 Monument  
Coordinates (04-18-2015)**  
Latitude: 35.137565  
Longitude: -77.171528

Not to Scale



## Site Map

North Carolina (page 2 of 2)  
Monitoring Well Network  
Clarks Site, S 22J  
Clarks, Craven County, NC

**NOTE:** This map is for informational purposes only. It does not authorize any party to enter onto any lands depicted herein.



Pond

culvert

light pole

Rest Area

Restrooms

US 70 Hwy  
Off Ramp